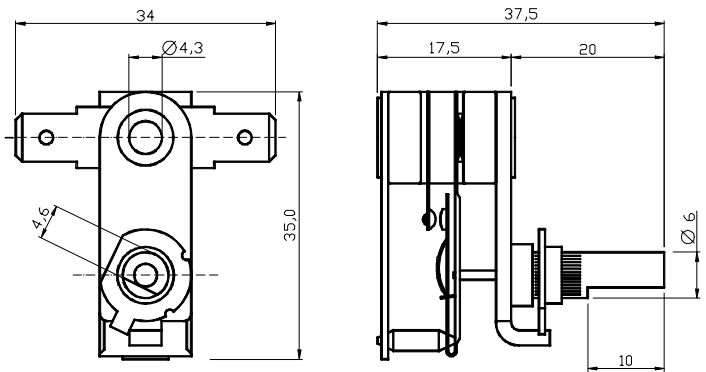


Thermal Control 141.141 Series Adjustable Thermostat with Snap-action Contact



Description: Adjustable thermostat with snap-action NC contact.
Opens contacts upon rising temperature when reaching the set temperature and recloses contacts, when the temperature has dropped by the differential.
The thermostat can be fixed directly on the heated part which is to be controlled, exhibiting rapid response to temperature changes.

Application: Ideal to control a user-selectable temperature within a preset temperature range. Typical applications are deep fat fryers, mini ovens, waffle irons, water boilers, baby bottle warmers, contact grills, etc. and any other application where to control the temperature of a surface or the ambient temperature.

Specifications:	<p>Contact ratings:</p> <p>240VAC, 16A res. $\geq 100,000$ cycles at $T_{max} = 200^{\circ}C$ 240VAC, 13.5A res. $\geq 100,000$ cycles at $T_{max} = 300^{\circ}C$ 120VAC, 15A res. $\geq 100,000$ cycles at $T_{max} = 200^{\circ}C$</p> <p>Tracking resistance of base material: PTI 175 Dielectric strength: 2,000 V_{eff}, 50Hz el. terminals to fixation</p>
Temperatures:	<p>Standard setting ranges:</p> <p>-7...+110°C $\pm 5K$ → Partnumber: 240201 -8...+230°C $\pm 12K$ → Partnumber: 240200</p> <p>Possible setting ranges:</p> <p>0...200°C at 15A and 16A 0...300°C at 13.5A Limited adjustment ranges on request.</p> <p>Differential: 8...20K Max. ambient temperature: 200°C at 15A and 16A 300°C at 13.5A</p>
Turning range:	approx. 305°
Certifications:	VDE, UL
Terminals:	6.3mm x 0.8mm fast-on blade terminal compliant with DIN EN 61210, other terminals on request

Note: In addition to the standard design, as specified here, these thermostats can also be provided with other setting ranges, a variety of electrical terminals in various angular positions and with mounting brackets, when ordered in large quantity.

Technical specifications as stated in our data sheets are based on the results of tests carried out in the facilities of Temtech or the respective manufacturer applying standard test methods and equipment. Results obtained with different test procedures and equipments may vary. The proper adjustment of the thermostats and any other component purchased from Temtech and proof of suitability for the intended application is in the buyer's own responsibility. Temtech makes no warranty as to mismatches of any kind. As we continuously improve our products we reserve the right to change specifications without prior notice.