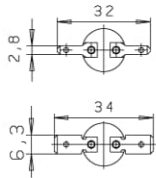
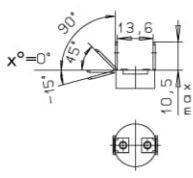


ELECTRICAL CONNECTION

Faston blade terminal DIN 46244

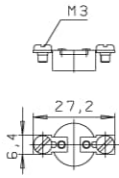


A 001 2,8x0,5-x°
A 002 2,8x0,8-x°



A 010 4,8x0,5-x°
A 003 4,8x0,8-x°
A 004 6,3x0,8-x°

Screwing terminal



A 005



A 006

Welding and soldering terminal

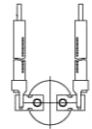


A 007 Soldering

A 008 Welding

Brass tinned
0.5mm or 0.8mm
Steel nickel-plated
0.5mm or 0.8mm

Lead wire connection



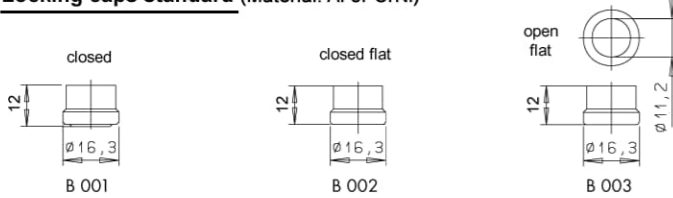
A 009
Specification
on request

LOCKING CAPS AND FASTENING CONNECTION

Series Kx / KB / SO / NCx / HCx / NCB / HCB / NCx

Series Cx / CB / CSO

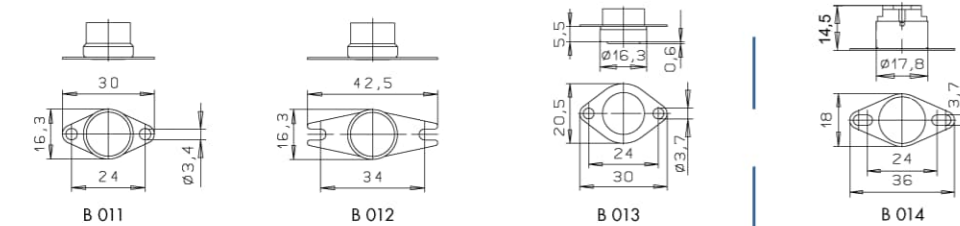
Locking caps standard (Material: Al or CrNi)



Locking caps with screw fitting (Material: Brass, threaded stud: standard threads M4x6, other sizes on request)

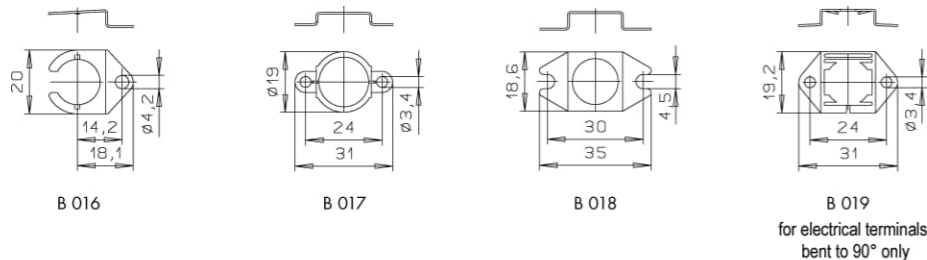


Locking caps with fixed flange (Material: CrNi, for Air flange cap Al or CrNi)

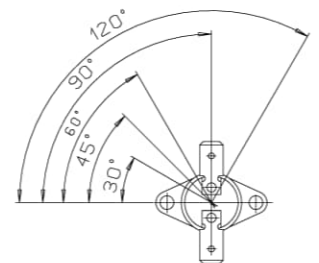


COMPONENT PARTS

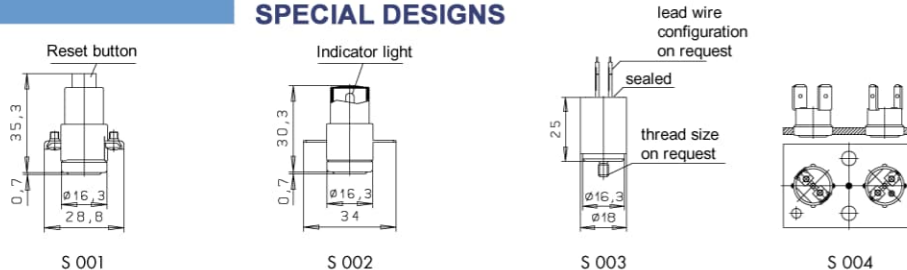
Loose flanges (only for series Kx / KB / SO / NCx / HCx / NCB / HCB / NCx)



Orientation for fixed flanges



SPECIAL DESIGNS



Special designs with various other electrical and fastening connections, sealed sleeves, wire connection, tip-free mechanism with manual reset, electric self-hold with switch position indicator light and custom-designed components are available on request. Subject to change.